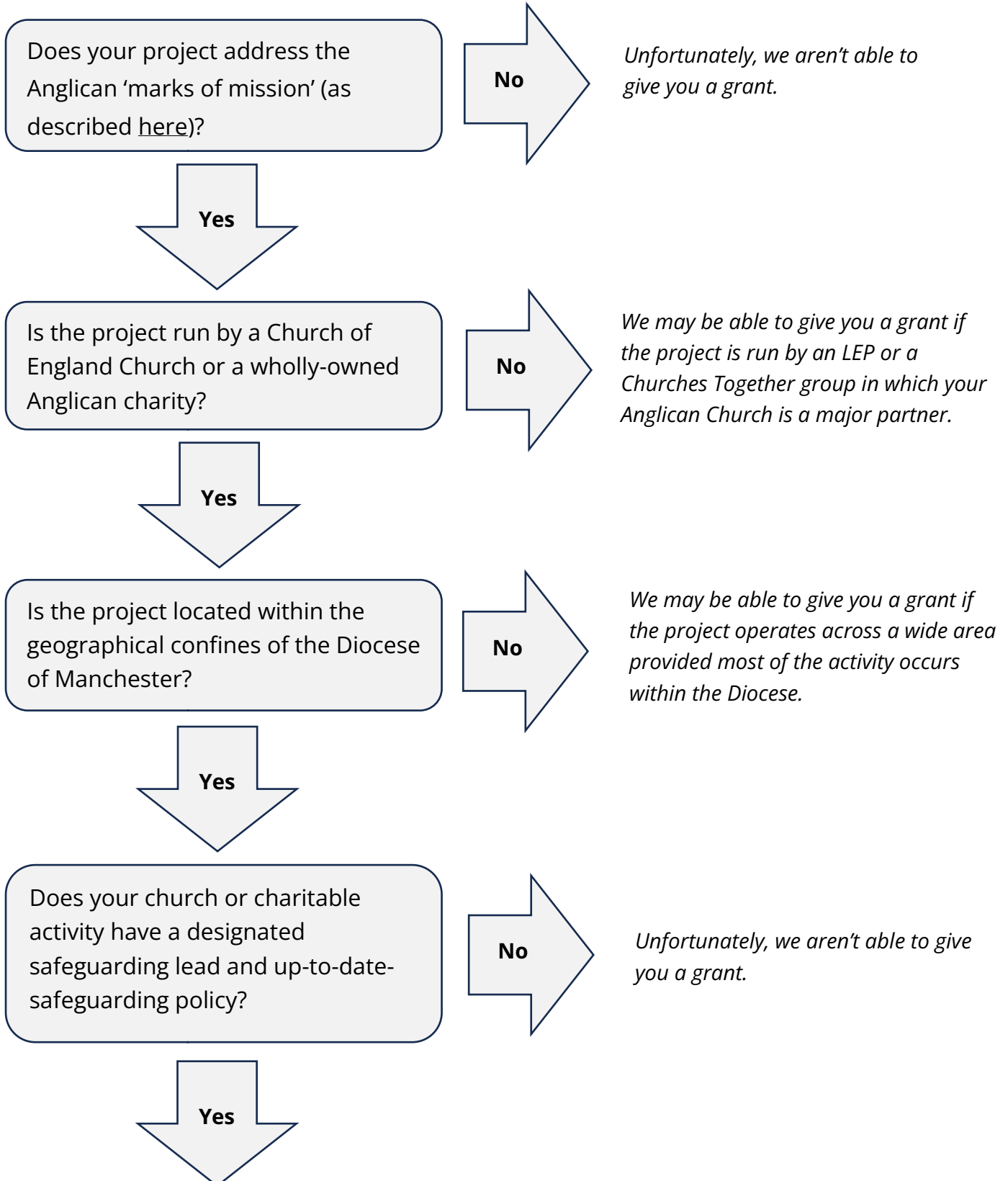
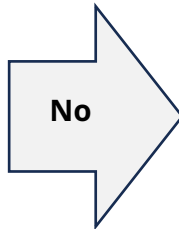


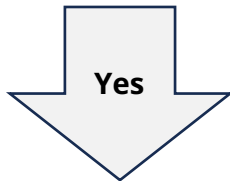
Eligibility



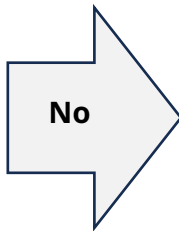
Does your church or charitable activity publish audited annual accounts?



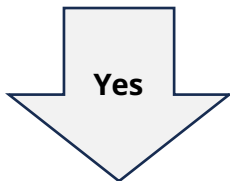
We may be able to give you a grant if your group was created too recently to compile formal accounts.



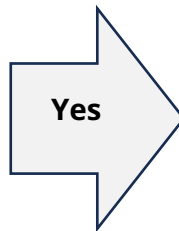
If you are applying for a small grant, is your annual income less than £200,000?



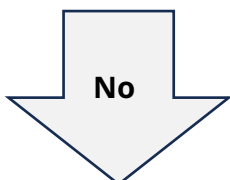
We may be able to give you a grant if your annual income during the most recent year for which you have accounts was higher, but only for an exceptional reason such as a building project.



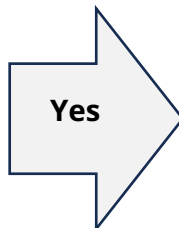
Are you seeking a grant for a capital project (building and purchase of large-scale equipment)?



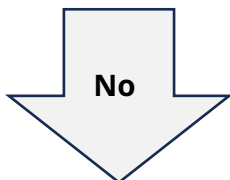
We may be able to give you a grant if the capital element is less than 50% of the overall budget, for example elementary adaptation.



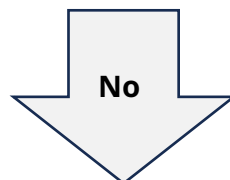
Has your project previously received a Large Grant from the CSA?



We may be able to give you a grant if you have previously received one or more small CSA grants for different projects.



Are your account signatories related in any way?



Does your project budget include campaigning for political activities or activities not connected to social action?

Yes

We may be able to give you a grant if your budget includes legitimate publicity.

No

Please complete an application form.